



ACCURACY
THROUGH
INNOVATION



PROGNOSIS
BIOTECH



PRODUCT CATALOG
R&D, IN VITRO DIAGNOSTICS FOR FOOD SAFETY

PROGNOSIS BIOTECH

AT A GLANCE



10 subsidiaries



Exports in 70 countries



Over 75 distributors worldwide



14,400 hours of employee training annually



2 production units



25% of Turnover Invested in R&D



200+ innovative products



Leading with Diversity: A 58% Female,
42% Male Workforce



140 employees



90% of Our Employees Are Degree Holders

PROGNOSIS BIOTECH SA

Established in 2011 and headquartered in Greece, ProGnosis Biotech is a pioneering biotechnology company specializing in the development and manufacturing of cutting-edge in-vitro testing technologies. Serving industries such as clinical diagnostics, food safety, and veterinary diagnostics, the company is recognized on a global scale for its commitment to precision and innovation.

Beyond its core operations, ProGnosis Biotech is distinguished by its ability to drive innovation across multiple technological fronts, including the development of proprietary antibodies and the creation of cutting-edge software and digital solutions.

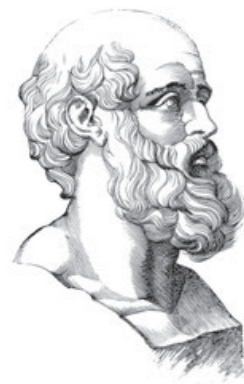
The company adopts a revolutionary approach by using data and cloud connectivity to accelerate decision making. By leveraging a mobile application that shares real-time test results along with GPS location, stakeholders can instantly access and review the data, making informed decisions about the tested samples. This innovative system reduces risk while boosting transparency and safety across the entire supply chain.

With a robust international presence, ProGnosis Biotech exports its ground-breaking products across five continents. The company remains focused on expanding its global footprint, continuing to penetrate new markets and reinforcing its reputation as a leader in diagnostic innovation.

DRIVEN BY PURPOSE: ACCURACY THROUGH INNOVATION

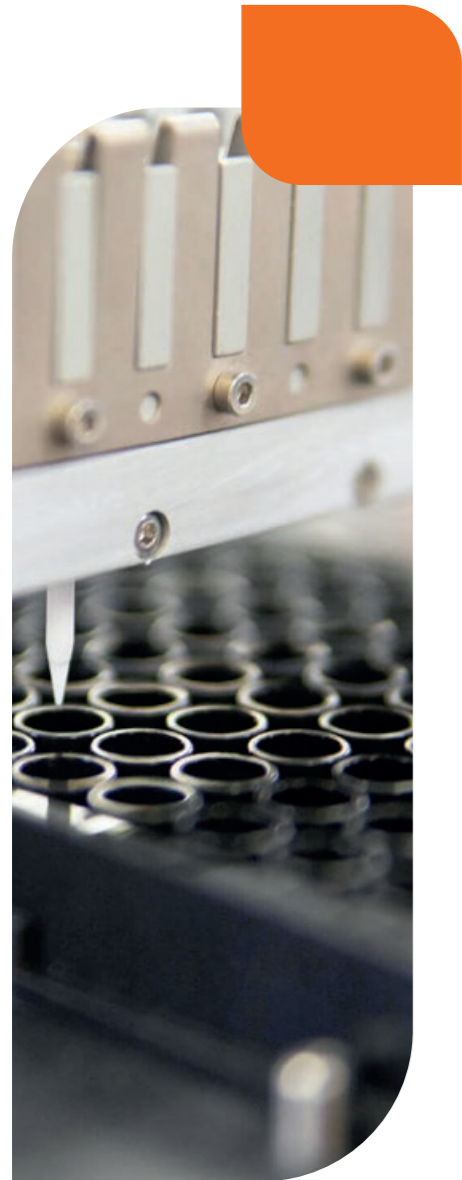
ProGnosis Biotech is deeply committed to advancing diagnostic solutions by allocating a significant portion of its annual revenue to Research and Development. This strong investment drives the creation of accurate, relevant and user-friendly diagnostic solutions, including ELISA and Lateral Flow tests. Each solution is carefully designed and thoroughly validated, ensuring precision and consistency in every production lot.

ANCIENT WISDOM, MODERN SOLUTIONS THE PROGNOSIS APPROACH



The word “Prognosis” has its roots in ancient Greek, combining “pro” (meaning before) and “gnosis” (meaning knowledge). In essence, it represents the ability to predict outcomes by expertly analyzing the facts. Hippocrates famously employed the term to forecast the course of a disease.

ProGnosis Biotech continues this legacy, applying its advanced expertise to deliver insightful analysis through cutting-edge solutions. By enabling informed decision-making, the company helps manufacturing companies and communities stay ahead of potential risks, ensuring safety and compliance at every operational stage for a healthier, safer tomorrow.



COMMITMENT TO TOTAL QUALITY MANAGEMENT

Total Quality Management is deeply embedded in ProGnosis Biotech's core values, shaping all company processes. This commitment reflects our dedication to maintaining the highest internal quality standards while delivering tailored solutions that consistently surpass customer expectations. The company strictly adheres to Good Manufacturing Practices (GMP) and the standards set by the International Organization for Standardization (ISO), proudly holding certifications for:

- ISO 9001:2015 Development, Manufacturing and Marketing of Diagnostic and Laboratory Products for Food Analysis.
- ISO 13485:2016 Design, Production Of Immunochemical In Vitro Diagnostics and Distribution of Medical Devices.
- ISO 37001:2016 Anti-bribery management systems.

QUALITY BEYOND BORDERS: INTERNATIONAL PRODUCT VALIDATIONS

ProGnosis Biotech's innovative products have garnered recognition from esteemed international institutions such as ILVO, USDA, AOAC, LILC and PIWET, reaffirming the company's commitment to the highest quality standards and product excellence. To further demonstrate this dedication, ProGnosis Biotech actively participates in monthly proficiency tests organized by Fapas (UK) and BIPEA (France).

INNOVATING FOR A SUSTAINABLE AND SAFE FUTURE

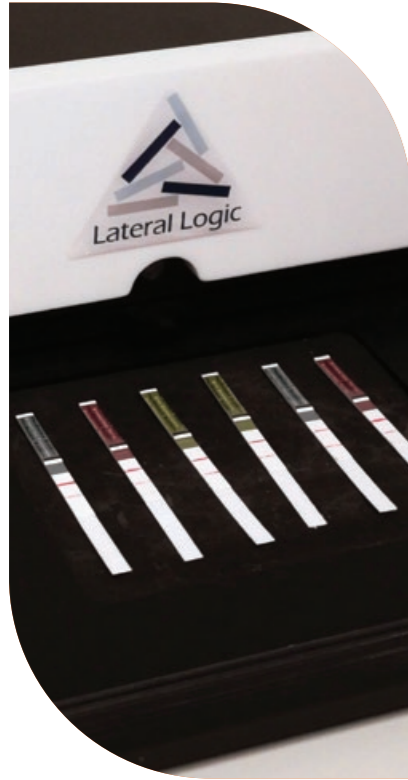


At ProGnosis Biotech, our mission is to create a safer, healthier world for future generations. Through innovative, tailored solutions we address the diverse demands of the food industry. We believe that responsible food safety practices go beyond product offerings - they require a holistic approach that benefits both society and the environment. Our advanced technologies empower stakeholders across the supply chain to meet the highest safety standards, reduce risks, and promote sustainability.

We pride ourselves on providing customized solutions to address our customers' specific challenges. By offering tailored products and services, we help ensure that each solution fits seamlessly into our clients' unique operational environments. Beyond delivering reliable diagnostic tools, we enhance the value of these solutions by offering hands-on technical training and ongoing support. This partnership-driven approach strengthens relationships and fosters a collaborative effort toward continuous improvement and compliance.

Our commitment to research and development fuels the creation of innovative technologies that address every stage of the supply chain, from field to shelf. By offering precision diagnostics paired with comprehensive support, we empower our customers to build trust and ensure safety throughout their operations. This holistic approach ultimately benefits society by providing consumers with safer, high-quality end products.

At ProGnosis Biotech, we proudly champion a comprehensive approach to food safety and sustainability. Our mission safeguards consumers today while fostering a future where innovation, collaboration, and accountability shape a more resilient and environmentally conscious world.



LATERAL FLOW



LATERAL FLOW | GMO

GMO DETECTION | CP4 EPSPS

Many countries implement stringent regulations regarding the cultivation, sale, and labeling of genetically modified (GM) crops. CP4 EPSPS (5-enolpyruvylshikimate-3-phosphate synthase) derived from *Agrobacterium tumefaciens* strain CP4 is a key enzyme commonly found in GMOs and serves as a reliable genetic marker for identifying genetic modification.

ProGnosis Biotech Rapid Test CP4 EPSPS provides a fast and accurate solution for distinguishing between GMO and non-GMO samples. Utilizing advanced lateral flow technology, the test delivers quantifiable results in just 5 minutes, enabling users to quickly assess the percentage of CP4 EPSPS present in their samples.



SCAN HERE FOR
PRODUCT SERIES VIDEO



Product Name	Product Code	LOQ	Quantification Range	Duration
Rapid Test CP4 EPSPS	R2130/60	0.05%	0-2 %	5 min



ANTIBIOTICS - MYCOTOXINS



QUANTUM READ A BINARY ANSWER IN THE SHORTEST POSSIBLE TIME

Quantum Series involves preparing a Quantum read, which is a method that exploits the properties of quantification mechanics of lateral flow, in order to obtain a binary answer in the shortest possible time.

It reads through different timelines and resembles the logic of the superposition of two states of quantum mechanics. It comes in a cassette format and the outcome of the measurement, positive or negative, depends on the probability distribution of the states in different time readings of the chemical reaction.

QUANTUM TESTS CAN BE READ EASILY ON THE GO WITH OUR MOBILE APP!
QUANTIFICATION IS MOVING OUTSIDE THE LAB.

FROM FARM TO CLOUD



QUANTUM AFLATOXIN M1
for the detection of Aflatoxin M1 in cow, sheep and goat milk, with no incubation needed.

Product Name	Product Code	Negative Results in	Quantitative Results in
Quantum M1	W3130/60	7 min	14 min





QUANTUM ANTIBIOTICS

for the detection of β -Lactams, Cefalexin, Tetracyclines, Sulfonamides, Quinolones, Streptomycin, Chloramphenicol and Ceftiofur in cow, sheep and goat milk.

SCAN HERE FOR
PRODUCT SERIES VIDEO



Product Name	Product Code	Negative Results in	Final Results in
Quantum BT-Cef ILVO LILC PIWET	W1030/60	90 sec	5 min
Quantum BT-S ILVO	W1130/60	90 sec	5 min
Quantum BT-SQ ILVO	W1230/60	2 min	5 min
Quantum BT-SC	W1330/60	2 min	5 min
Quantum BL	W1430/60	60 sec	2 min
Quantum BT-CC	W1530/60	2 min	5 min



QUANTUM BT-CEF, BT-S AND BT-SQ
RECEIVED THE ILVO VALIDATION



QUANTUM MYCOTOXINS

designed to quantify Mycotoxins at very low concentrations in grains, cereals and nuts.

Product Name	Product Code	Negative Results in	Quantitative Results in
Quantum Don W.E.	G4118/40	30 sec	90 sec
Quantum Don Green	G4018/40	45 sec	2 min
Quantum Fumonisin Green USDA	G7018/40	45 sec	2 min
Quantum Ochratoxin Green	G6018/40	2 min	4 min
Quantum Zon Green	G5018/40	2 min	4 min
Quantum Total 0-30 Green	G3418/40	2 min	4 min
Quantum T2-HT2 Green	G8018/40	2 min	4 min

GREEN COMMON
EXTRACTION
FOR ALL MYCOTOXINS



QUANTUM FUMONISIN GREEN
IS APPROVED BY USDA



SYMMETRIC

LATERAL FLOW | MYCOTOXINS | ANTIBIOTICS

SYMMETRIC TECHNOLOGY

TRANSFORMS A SCREENING TOOL INTO A CONFIRMATORY METHOD

Symmetric Technology emerges from a comprehensive four-year R&D initiative aimed at advancing lateral flow testing. Products developed under this technology are distinguished by their precision and accuracy, consistently providing high sensitivity and stability.

Initially developed for mycotoxin detection, the scope of Symmetric Technology has expanded to include antibiotics, making a significant breakthrough in elevating lateral flow tests from simple screening tools to reliable, confirmatory methods.



Flanders Research Institute for Agriculture, Fisheries and Food

SYMMETRIC M1, SYMMETRIC B+T AND SYMMETRIC BTS RECEIVED THE ILVO VALIDATION



Product Name	Product Code	LOQ	Quantification Range	Duration
Symmetric M1 ILVO	S2148/96	8 ppt	8-150 ppt	10 min
Symmetric M1 1000	S2448/96	70 ppt	70 -1000 ppt	3 min
Symmetric M1 400	S2548/96	12 ppt	12-400 ppt	10 min

Product Name	Product Code	Duration
Symmetric B+T ILVO LILC PIWET	S1048/96	5 min
Symmetric BTS ILVO	S1248/96	5 min
Symmetric BTSC (RU MRLs)	S1448/96	10 min
Symmetric Tetracyclines in Honey	S0124	10 min
Symmetric Florfenicol	S1548/96	5 min

SYMMETRIC ANTIBIOTICS

for the detection of β -Lactams, Tetracyclines, Sulfonamides, Florfenicol, Streptomycin & Chloramphenicol in milk, and Tetracyclines in honey



SCAN HERE FOR PRODUCT SERIES VIDEO



SYMMETRIC EXTRA SENSITIVE | ORGANIC SOLVENT EXTRACTION

designed to quantify Mycotoxins at very low concentrations in grains, cereals, nuts and coffee

Product Name	Product Code	LOQ	Quantification Range	Duration
Symmetric B1 ES	S3124/48	0.70 ppb	0.70 - 20 ppb	10 min
Symmetric Total ES	S3224/48	0.35 ppb	0.35 -10 ppb	10 min
Symmetric Ochratoxin Coffee	S6324/48	0.90 ppb	0.90 - 20 ppb	10 min
Symmetric Ochratoxin ES	S6424/S6448	0.70 ppb	0.7- 20 ppb	10 min



SYMMETRIC GREEN SERIES

ONE GREEN EXTRACTION

Symmetric Green is an advanced Lateral Flow test series for the precise, quantitative detection of major mycotoxins, including Aflatoxins B1, B2, G1, G2, Deoxynivalenol, Zearalenone, Ochratoxin, Fumonisin, T-2/HT-2. This series is suitable for a variety of matrices, such as grains, nuts, cereals and other commodities including animal feed.

THE SYMMETRIC GREEN SERIES UTILIZES AN AQUEOUS BUFFER FOR THE EXTRACTION STEP, WHILE ALSO PROVIDING A SIGNIFICANT ADVANTAGE TO USERS, BY ENABLING A SINGLE EXTRACTION METHOD TO BE APPLIED ACROSS ALL MYCOTOXINS.

This aqueous extraction method not only enhances efficiency but also aligns with ProGnosis Biotech's dedication to sustainability. By eliminating the need for organic solvents (such as methanol), the SYMMETRIC Green Series reduces environmental impact and minimizes the health risks posed by frequent exposure to hazardous chemicals in the laboratory.

Aqueous Extraction

Product Name	Product Code	LOQ	Quantification Range	Duration
Symmetric B1 Green	S3724/48	1.3 ppb	1.3-30 ppb	3 min
Symmetric Total Green 0-30	S3424/48	1.3 ppb	1.3-30 ppb	3 min
Symmetric DON Green	S4024/48	150 ppb	150-5000 ppb	3 min
Symmetric Ochratoxin Green	S6024/48	1 ppb	1-20 ppb	3 min
Symmetric ZON Green	S5024/48	35 ppb	35-800 ppb	3 min
Symmetric Fumonisin Green	S7024/48	150 ppb	150-4000 ppb	3 min
Symmetric T-2/HT-2 Green	S8024/48	25 ppb	25-300 ppb	3 min

Product Name	Product Code	LOQ	Quantification Range	Duration
Symmetric Ochratoxin Wine	S6224/48	0.35 ppb	0.35 - 5 ppb	5 min



SCAN HERE FOR
PRODUCT SERIES VIDEO





LATERAL FLOW | ALLERGEN

Food allergies and hypersensitivities impact millions globally, with symptoms ranging from mild to life-threatening. To protect consumers, regulatory bodies enforce strict allergen testing guidelines for food manufacturers.

The Allergen Free series provides fast and accurate detection of various allergenic proteins using a common* green extraction buffer, offering both efficiency and environmental benefits. This sustainable approach aligns with Prognosis Biotech's ESG values, reducing the reliance on harmful chemicals and promoting greener practices.

Featuring a consistent protocol across all allergens* and a hook line to prevent false negatives, these user-friendly lateral flow tests in a cassette format deliver reliable results while minimizing cross-contamination risks.

COMMON GREEN EXTRACTION & PROTOCOL FOR ALL ALLERGENS*



QUANTITATIVE RESULTS



SCAN HERE FOR
PRODUCT SERIES VIDEO



Product Name	Product Code	LOD	Quantification Range	Duration
Almond Free Test	E1010/30	1 ppm	2-128 ppm	5 min
Hazelnut Free Test	E1110/30	1 ppm	2-128 ppm	5 min
Peanut Free Test	E1210/30	2 ppm	4-128 ppm	5 min
Walnut Free Test	E1410/30	3 ppm	5-128 ppm	5 min
Egg Free Test	E1510/30	1 ppm	2-128 ppm	5 min
Pistachio Free Test	E1610/30	2 ppm	4-128 ppm	5 min
Cashew Free Test	E1710/30	3 ppm	4-128 ppm	5 min
Pecan Free Test	E1810/30	2 ppm	4-128 ppm	5 min
Soy Free Test	E1310/30	1.0 ppm	1.5-100 ppm	5 min
Gluten Free Test	E1910/30	3 ppm	5-100 ppm	5 min
Lupin Free Test	E2310/30	0.5 ppm	1-32 ppm	5 min
Brazil Nut Free Test	E2010/30	2 ppm	3-128 ppm	5 min
Mustard Free Test	E2110/30	2 ppm	3-128 ppm	5 min
Crustaceans Free Test	E2910/30	2 ppm	3-150 ppm	5 min
BLG Free Test	E2710/30	1.5 ppm	-	5 min
Casein Free Test	E2210/30	4 ppm	6-128 ppm	5 min
Total Milk Free Test	E2810/30	2 ppm	-	5 min

* Except Milk



RAPID TEST



THE ONLY QUANTITATIVE LATERAL FLOW TEST FOR MILK ADULTERATION

RAPID TESTS CAN QUANTIFY FROM NEGATIVE TO >2% ADULTERATION, IN JUST 3 MINUTES



Product Name	Product Code	LOD	Quantification Range	Duration
Rapid Test Cow (Quantitative)	Q1230/120	0.1 %	0.1-2 %	3 min
Rapid Test Goat (Quantitative)	Q1130/120	0.1 %	0.1-2 %	3 min
Rapid Test Buffalo (Quantitative)	Q1530/60	0.05%	0.1-2 %	5 min

RAPID TEST COW
RAPID TEST GOAT

NO FALSE POSITIVE-NEGATIVE RESULTS
ONLY 3 MINUTES
SUITABLE FOR TESTING IN THE FIELD & IN THE LABORATORY
SHELF LIFE: 12 MONTHS | STORAGE 15-25 °C

SCAN HERE FOR
PRODUCT SERIES VIDEO



ELISA MYCOTOXINS



AFLATOXIN M1

Aflatoxins, toxic metabolites produced by *Aspergillus* species, pose serious risks to the dairy industry due to their immunosuppressive, mutagenic, teratogenic, and carcinogenic effects. When animals ingest contaminated feed, aflatoxins are transformed into Aflatoxin M1 (AFM1) and excreted into milk, which is then used for human consumption. AFM1 in milk and dairy products presents health risks, leading the EU to set stringent limits of 0.05 µg/kg (50 ppt) and 0.025 µg/kg (25 ppt) for infant food.

ELISA testing is a reliable method for detecting Aflatoxin M1 in milk and dairy products, providing a sensitive and cost-effective solution for screening and quantifying AFM1 levels. Our Bio-shield products specifically created for Aflatoxin M1 detection accurately quantify its concentration in milk, ensuring compliance with regulatory limits in each region.



SCAN HERE FOR
PRODUCT SERIES VIDEO



Product Name	Product Code	LOQ	Quantification Range	Duration
Bio-Shield M1 ES ILVO	B2048/96/192	5 ppt	5-250 ppt	75 min
Bio-Shield M1 BF (Baby Food)	B3048/96/192	5 ppt	5-80 ppt	75 min
Bio-Shield M1 Fast	B2548/96	10 ppt	10-250 ppt	30 min
Bio-Shield M1 UF MYD	B2248/96	100 ppt	100-1000 ppt	20 min

**BIO-SHIELD M1 ES RECEIVED
THE ILVO VALIDATION**

ILVO
Flanders Research Institute for
Agriculture, Fisheries and Food

MYCOTOXINS

Government agencies worldwide enforce strict regulations on the allowable concentrations of mycotoxins in food and feed, particularly in infant food. Rapid and accurate detection of mycotoxins is critical to ensure compliance and protect public health.

There are six major groups of mycotoxins that can be found quite often in food and feed: Deoxynivalenol, Zearalenone, Ochratoxin, Fumonisin, T2-HT2 toxins and Aflatoxins B1,B2,G1,G2.

Our Bio-shield series for mycotoxin detection delivers fast results with the highest accuracy, across a wide range of difficult matrices, especially feed. The common extraction protocol not only facilitates multi-toxin analysis, making it a cost-effective screening method, but also supports sustainability by reducing the need for multiple extraction processes. With the sensitive Bio-Shield 5' series, approved by the USDA, accurate results can be achieved in as little as 5 minutes!



**COMMON
EXTRACTION
PROTOCOL**

**BROAD RANGE OF
VALIDATED MATRICES**

SCAN HERE FOR
PRODUCT SERIES VIDEO



HIGHLY SENSITIVE



Product Name	Product Code	LOQ	Quantification Range	Duration
Bio-Shield B1 5	B5048/96	2 ppb	2-50 ppb	5 min
Bio-Shield B1 OP	B3348/96	2.5 ppb	2.5-50 ppb	20 min
Bio-Shield B1 ES	B2948/96	0.5 ppb	0.5-10 ppb	20 min
Bio-Shield B1 BF	B3148/96	0.06 ppb	0.06-2.5 ppb	75 min
Bio-Shield Total ES	B2348/96	0.6 ppb	0.6-10 ppb	20 min
Bio-Shield Total OP	B3948/96	3 ppb	3-50 ppb	20 min
Bio-Shield Ochratoxin 8	B5448/96	2 ppb	2-40 ppb	8 min
Bio-Shield Ochratoxin	B2448/96	1.5 ppb	1.5-40ppb	20 min
Bio-Shield ZON	B2748/96	15 ppb	15-500 ppb	15 min
Bio-Shield DON 5 W.E.	B5748/96	100 ppb	100-5000 ppb	5 min
Bio-Shield DON	B2648/96	100 ppb	100-5000 ppb	20 min
Bio-Shield DON M.E.	B3848/96	100 ppb	100-5000 ppb	20 min
Bio-Shield Fumonisin	B2848/96	120 ppb	120-6000 ppb	15 min
Bio-Shield T-2/HT-2 8	B5648/96	20 ppb	20-500 ppb	8 min
Bio-Shield T-2/HT-2	B3248/96	10 ppb	10-500 ppb	15 min
Bio-Shield T2	B4148/96	6 ppb	6-500 ppb	20 min



**BIO-SHIELD TOTAL 5, ZON 5, FUMONISIN 5 & DON 5
ARE APPROVED BY USDA**

Bio-Shield Total 5 USDA	B5148/96	2.5 ppb	2.5-50 ppb	5 min
Bio-Shield ZON 5 USDA	B5348/96	25 ppb	25-500 ppb	5 min
Bio-Shield Fumonisin 5 USDA	B5548/96	200 ppb	200-5000 ppb	5 min
Bio-Shield DON 5 USDA	B5248/96	100 ppb	100-5000 ppb	5 min



STANDARD MYCOTOXINS



Product Name	Product Code	LOQ	Quantification Range	Duration
1-Standard Total	D4348	2.5 ppb	2.5-50 ppb	5 min
1-Standard B1	D4948	2 ppb	2-50 ppb	5 min
1-Standard DON	D4548	100 ppb	100-5000 ppb	5 min
1-Standard DON W.E.	D4848	100 ppb	100-5000 ppb	5 min
1-Standard ZON	D4448	25 ppb	25-500 ppb	5 min
1-Standard Fumonisin	D4748	200 ppb	200-5000 ppb	5 min
1-Standard Ochratoxin	D4148	2 ppb	2-40 ppb	8 min
1-Standard T-2/HT-2	D4248	20 ppb	20-500 ppb	8 min

SCAN HERE FOR PRODUCT SERIES VIDEO



**ONLY ONE STANDARD NEEDED
5-MIN ELISA METHOD
SHELF LIFE: 12 MONTHS**

AN ACCURATE AND COST-EFFECTIVE ELISA METHOD

1-Standard ELISA innovates ELISA testing by using a precalibrated curve for the quantification of mycotoxins, in only 5 minutes. Unlike typical ELISA protocols that require several standards, the 1-standard ELISA requires only the first analyte-free standard.

Each curve is unique for every lot, thoroughly validated internally and available for download via the ProGnosis Data Reader. 1- Standard ELISA testing is the ideal solution for small labs that do not wish to waste extra wells for analyzing a small number of samples.



ELISA | ALLERGENS

The Allergen-Shield Series delivers precise quantitative results in just 30 minutes with high specificity, thanks to monoclonal antibodies. These ELISA tests accurately detect allergens in a broad variety of validated matrices, which in turn ensures the safety and allergen compliance of products.

The Allergen-Shield Swabbing Kit is an additional product available for all Allergen-Shield tests, designed to assist in monitoring surface contamination and ensuring effective cleaning control for allergenic proteins.



SWABBING KITS AVAILABLE FOR ALL ALLERGENS

AS1020 |Allergen Shield Swabbing Kit
 AS1220 |Allergen Shield Swabbing Kit Gluten
 AS1120 |Allergen Shield Swabbing Kit Soy
 AS1320 |Allergen Shield Swabbing Kit Milk

Product Name	Product Code	LOQ	Quantification Range	Duration
Allergen-Shield Gluten S	A1048/96	5 ppm	5-80 ppm	30 min
Allergen-Shield Soy	A1848/96	1 ppm	1-25 ppm	30 min
Allergen-Shield Buckwheat	A3148/96	1 ppm	1-25 ppm	30 min
Allergen-Shield Total Milk*	A1448/96	2.5 ppm	2.5-67.5 ppm	30 min
Allergen-Shield Casein*	A1248/96	0.5 ppm	0.5-30 ppm	30 min
Allergen-Shield BLG*	A1348/96	0.15 ppm	0.15-4.5 ppm	30 min
Allergen-Shield Almond**	A1548/96	1 ppm	1-25 ppm	30 min
Allergen-Shield Hazelnut**	A1648/96	1 ppm	1-25 ppm	30 min
Allergen-Shield Peanut**	A1748/96	1 ppm	1-25 ppm	30 min
Allergen-Shield Egg**	A1148/96	1 ppm	1-20 ppm	30 min
Allergen-Shield Cashew**	A1948/96	1 ppm	1-25 ppm	30 min
Allergen-Shield Pistachio**	A2148/96	1 ppm	1-25 ppm	30 min
Allergen-Shield Walnut**	A2348/96	2.5 ppm	2.5-100 ppm	30 min
Allergen-Shield Brazil Nut**	A2948/96	1 ppm	1-25 ppm	30 min
Allergen-Shield Lupin**	A2648/96	1 ppm	1-25 ppm	30 min
Allergen-Shield Macadamia**	A2748/96	1 ppm	1-25 ppm	30 min
Allergen-Shield Mustard**	A2848/96	1 ppm	1-25 ppm	30 min
Allergen-Shield Pecan**	A2048/96	1 ppm	1-25 ppm	30 min
Allergen-Shield Pine Nut**	A3048/96	1 ppm	1-25 ppm	30 min
Allergen-Shield Sesame**	A2248/96	1 ppm	1-25 ppm	30 min
Allergen-Shield Coconut**	A2448/96	1 ppm	1-25 ppm	30 min
Allergen-Shield Crustaceans**	A2548/96	5 ppm	5-100 ppm	30 min
Allergen-Shield Fish**	A3248/96	4 ppm	4-100 ppm	30 min

*Common extraction | **Common extraction

ELISA ANTIBIOTICS



ELIMINATE ANTIBIOTIC RESIDUES IN FOOD

Antibiotics are commonly used in farming, aquaculture, and apiculture to prevent the spread of disease in crowded conditions. **Bio-Shield Antibiotic Series** is an ELISA testing solution for the detection of Chloramphenicol and Nitrofurans, in various food products such as meat, milk, honey, and seafood.

Chloramphenicol is a broad-spectrum antibiotic banned in food-producing animals due to its link to aplastic anemia and other toxic effects. Even trace residues in food, including meat, milk, honey, and seafood, pose serious health risks.

Nitrofurans, a group of synthetic antibiotics, are banned in many regions due to concerns about their carcinogenic and mutagenic properties. Nitrofurans are rapidly metabolized in the body, meaning their metabolites are the key indicators detected during testing. These include:

- **AOZ** (3-amino-2-oxazolidinone): Metabolite of furazolidone
- **AMOZ** (3-amino-5-morpholinomethyl-2-oxazolidinone): Metabolite of furaltadone.
- **SEM** (semicarbazide): Metabolite of nitrofurazone.
- **AHD** (1-aminohydantoin): Metabolite of nitrofurantoin.



Product Name	Product Code	LOQ	Quantification Range	Duration
Bio-Shield Chloramphenicol	B8048/96	0.0125 ppb	0-1 ppb	40 min
Bio-Shield AHD	B8148/96	0.1 ppb	0.1 - 2.5 ppb	30 min
Bio-Shield SEM	B8448/96	0.2 ppb	0.2-10 ppb	45 min
Bio-Shield AOZ	B8248/96	0.1 ppb	0.1-2.5 ppb	90 min
Bio-Shield AMOZ	B8348/96	0.15 ppb	0.15-5 ppb	45 min



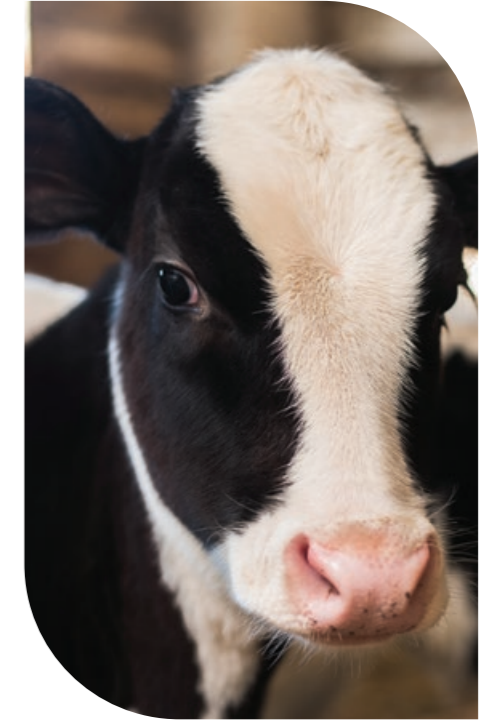
ELISA

MILK ADULTERATION

Adulterated milk, whether consumed directly or used in products like cheese (including feta, a Protected Designation of Origin, PDO product), results in a lower-quality outcome than consumers expect. Cow's milk, often targeted for adulteration due to its lower cost, is a common cause of food allergies, while goat's milk can trigger a rare allergic disorder. Both must be clearly declared on food labels.

To ensure consumer safety and maintain product integrity, rigorous testing for adulterants is crucial. Our precise testing solutions, not only improve product quality, but also protect brands by fostering trust within the dairy industry. By safeguarding public health, we contribute to a healthier, more reliable food supply for all.

ELISA testing offers a more accurate and user-friendly method for detecting milk adulteration compared to labor-intensive techniques like chromatography and electrophoresis. The Bio-Shield Adulteration Series provides a cost-effective and precise solution for milk screening.



Product Name	Product Code	LOQ	Quantification Range	Duration
Bio-Shield Adulteration Cow	B0248/B0296	0.15%	0.15-4%	85 min
Bio-Shield Adulteration Goat	B0148/B0196	0.35 %	0.35-25 %	85 min
Bio-Shield Adulteration Cow Cheese	B0348	0.15 %	0.15-4 %	85 min

HISTAMINE

ELISA | LATERAL FLOW



Histamine, a heterocyclic primary amine, is produced when the enzyme histidine decarboxylase - generated by certain bacteria - decarboxylates the amino acid L-histidine. This process primarily occurs in seafood after harvesting, especially in scombroid fish such as tuna, mahi mahi, mackerel, sardines, and herring. It can also be found in fermented products, such as cheese, yogurt, wine and beer, and also cured meats.

Elevated histamine levels can lead to scombroid poisoning in humans, prompting regulatory measures in many countries. In high-quality fish, histamine levels are typically kept below 10 ppm.

ProGnosis Biotech offer both ELISA and Lateral flow solutions for histamine detection that eliminate the need for acylation. Bio-Shield and 1-Standard Histamine both provide rapid results in just 20 minutes, differing only in the number of standards required. Notably, the Symmetric Histamine employs a water extraction method, aligning with our commitment to sustainable practices. This approach delivers quantitative results in just 3 minutes and includes an option for visual interpretation, revolutionizing histamine detection while promoting environmental sustainability.

BROAD RANGE OF QUANTIFICATION
OPTIONAL VISUAL DETECTION LIMIT AT 35 PPM
FAST PROTOCOLS
NO ACYLATION REQUIRED

SCAN HERE FOR
PRODUCT SERIES VIDEO



Product Name	Product Code	LOQ	Quantification Range	Duration
Bio-Shield Histamine	B6048/96/576	2.5 ppm	2.5-200 ppm	20 min
Symmetric Histamine	S9030	8 ppm	8-300 ppm	3 min
1-Standard Histamine	D4648	2.5 ppm	2.5-200 ppm	20 min

ATP CLEANING VERIFICATION



ATP FLOW

SURFACE AND WATER TESTING EFFICIENT REAL-TIME HYGIENE MONITORING



ProGnosis Biotech's advanced ATP Surface and Water Testing Series, known as ATP FLOW, provides an effective solution for hygiene monitoring and cleanliness verification.

ATP is a reliable indicator of microbial presence or residues that may promote their growth.

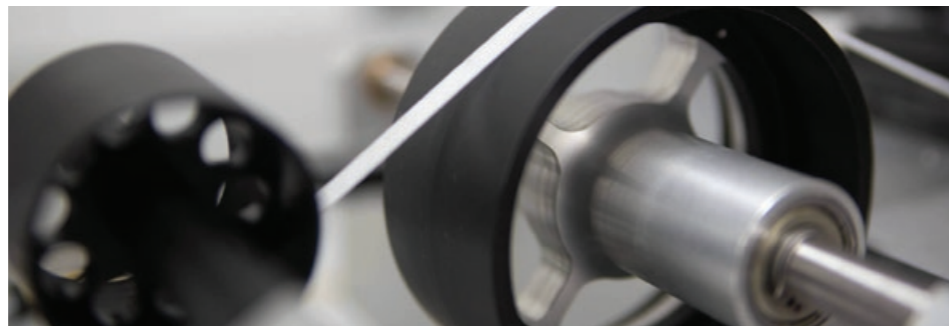
ATP FLOW is designed for surface testing, while ATP FLOW TOTAL is equipped with a specialized sampling tip to detect both microbial and non-microbial ATP in water samples.

Product Name	Product Code
ATP-FLOW (Surface ATP Test)	SW1020
ATP-FLOW Total (Water ATP Test)	SW1120

SCAN HERE FOR
PRODUCT SERIES VIDEO



HARDWARE & SOFTWARE



PRECISE LATERAL FLOW READERS

FIELD-DEPLOYABLE HARDWARE FOR OUR LATERAL FLOW KITS



SCAN HERE FOR
PRODUCT SERIES VIDEO



3PR MINI

The newly developed 3PR field reader from ProGnosis Biotech enables users to achieve fast, easy, and quantitative results with our lateral flow devices in just minutes. This lightweight system operates via Bluetooth, allowing compatibility with portable tablet devices or via our Android mobile app.

Benefits:

- Fast and lightweight, enabling on-site results without the need for specialized equipment
- Analyzes three strips simultaneously in just a few seconds
- User-friendly; no special training required for operation
- Bluetooth connectivity with Windows-enabled tablet devices
- Compatible with our Android mobile app

S-FLOW READER

The Prognosis Biotech S-Flow reader is engineered for high-throughput analysis of our lateral flow devices.

Benefits:

- Precise and rapid scanning process
- Analyzes up to six strips simultaneously in just a few seconds
- Capable of reading various product test strips at the same time
- User-friendly; no special training required for operation
- Field deployable for enhanced versatility

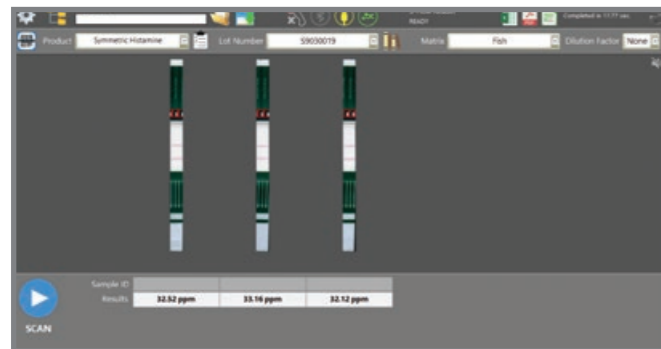


INTUITIVE SOFTWARE SOLUTIONS

DESIGNED TO FACILITATE YOUR ANALYSIS AND RESULTS REPORTING

PROGNOSIS DATA READER ELISA Analysis

ProGnosis Biotech offers a standalone, user-friendly, statistical analysis program designed to streamline laboratory data analytics and reporting. The Prognosis data reader can import microplate readout values from the spectrophotometer and automatically generate comprehensive analytic reports of ELISA results, requiring no additional effort from the user. Customized reporting options are also available through our software solutions team.

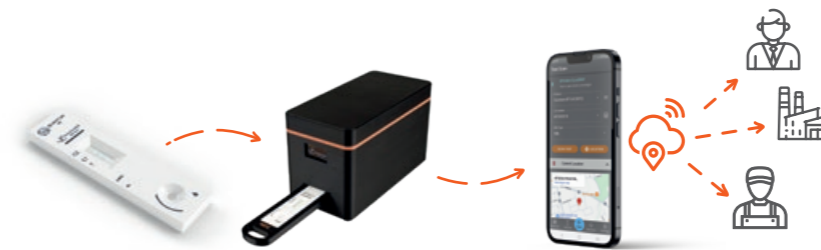
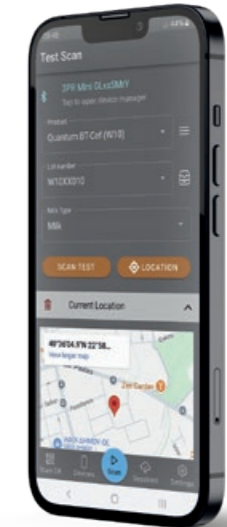


S-FLOW SOFTWARE Next Generation Lateral Flow Analysis

S-Flow is our versatile software platform designed for the quantitative analysis of one or more lateral flow devices. This platform is regularly updated with the latest calibration data to ensure users achieve accurate results on the field every time. Additionally, customized reporting options are available through our software solutions team.

INNOVATIVE MOBILE APP Lateral Flow Analysis

ProGnosis Biotech's Android mobile app streamlines food safety testing by delivering immediate quantitative results alongside GPS data. Seamlessly connecting to the 3PR mini reader via Bluetooth, it securely stores results in the cloud, allowing real-time access for laboratory personnel and key stakeholders. This capability enables non-specialized staff to conduct remote testing while supporting informed decision-making and transparency throughout the food supply chain.



ACCURACY THROUGH INNOVATION





PROGNOSIS BIOTECH SA

www.prognosis-biotech.com

✉ info@prognosis-biotech.com

☎ +30 2410 623922

📍 Farsalon 153 | 41335 Larissa, Greece