

# HYGIENE MONITORING SOLUTIONS

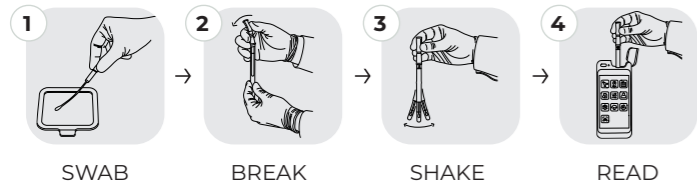
**ATP & PROTEIN** residue detection



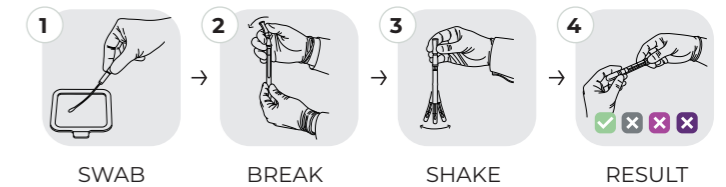
**Detect  
The Invisible**



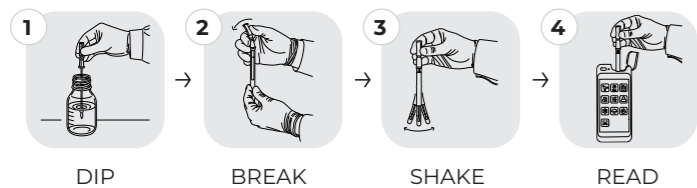
- ✓ Fast results in **10 seconds**
- ✓ **Portable on-site** ATP detection
- ✓ Results: on the **Screen**, your **PC** or the **Cloud**
- ✓ LOD: **0.53 fmole ATP**



- ✓ Results within **10 minutes**
- ✓ **Colorimetric visual detection** (green → purple shift)
- ✓ **Semi-quantitative detection** of protein residues on surfaces
- ✓ LOD: **10 µg protein**
- ✓ **No incubation** required



- ✓ Immediate results in **10 seconds**
- ✓ **Ideal for CIP** (Clean-In-Place) systems and rinse water
- ✓ Detects both **microbial** and **non-microbial ATP**
- ✓ Results: on the **Screen**, your **PC** or the **Cloud**



### At a Glance

TEST	MATRIX	TECHNOLOGY	READING	RESULT
<b>ATP-FLOW Surface</b>	Surface	Bioluminescence	PhosReader 2	Relative Light Units (RLU)
<b>ATP-FLOW Total Water</b>	Water	Bioluminescence	PhosReader 2	Relative Light Units (RLU)
<b>PROTEIN-FLOW</b>	Surface	Colorimetric	Visual	Color change



### Industries of Application

- **Food & Beverage** Production
- **Dairy and Meat Processing** Plants
- **Bakeries and Confectionery** Units
- **Pharmaceutical and Cosmetic** Manufacturing
- **Catering and Hospitality**
- **Agriculture and Animal Health** Industry
- **Water Treatment and Industrial Hygiene**



# PHOSREADER<sup>2</sup>

## Luminometer



**Portable & Lightweight**



Results: **on the screen**,  
your **PC** or the **Cloud**



**Bluetooth, Wi-Fi**  
& **USB** connectivity



Fast **10-second** readings



User-friendly **touch-screen**



**Easy-to-operate** Software  
Interface (PhosConnect)



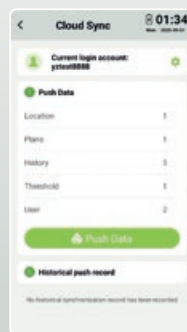
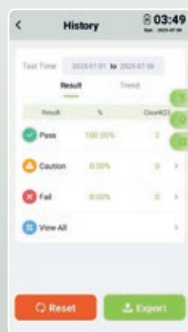
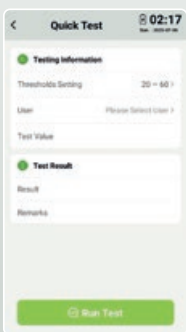
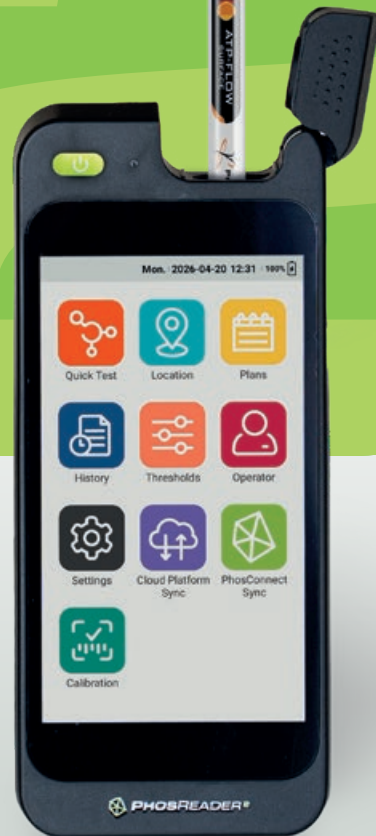
**Automatic self-calibrating**



**Large Storage Capacity:**  
over 10 million data entries



**CE and RoHS** certified



[www.prognosis-biotech.com](http://www.prognosis-biotech.com)



[exports@prognosis-biotech.com](mailto:exports@prognosis-biotech.com)



**PROGNOSIS**  
**BIOTECH**