

# **RAPID TEST**

# **FLU A\_B**

V1701/V1705/V1720

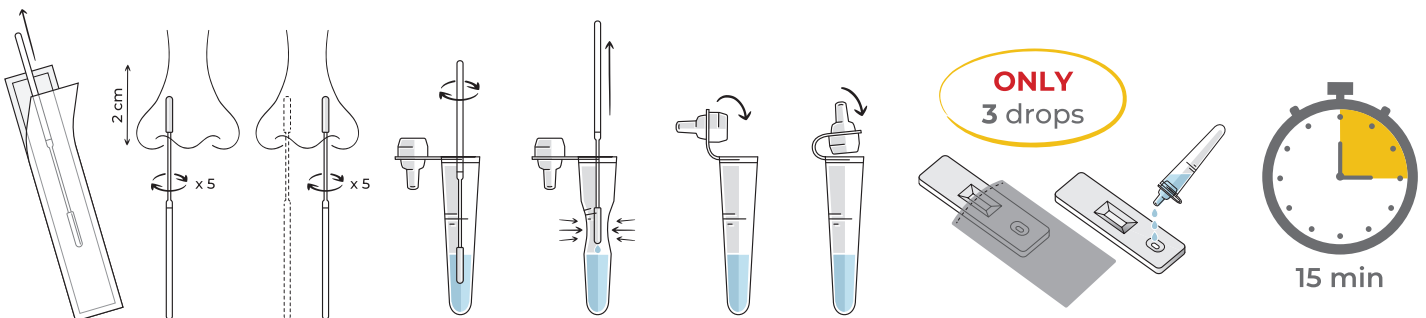
# BE SURE BE SPECIFIC

ONE NASAL SWAB  
FOR 2 DIAGNOSES  
(FLU A | FLU B)

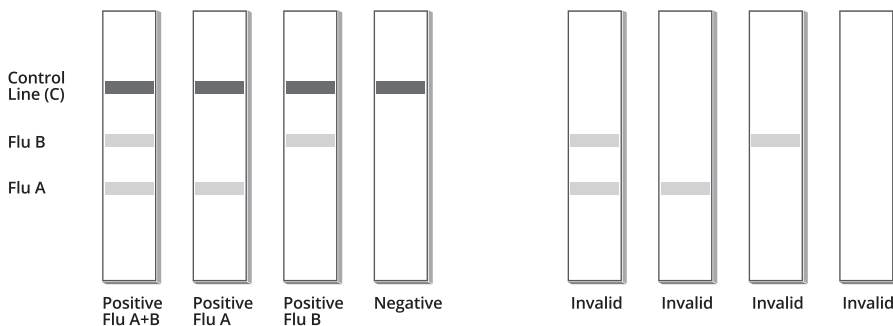
**Rapid Test FLU A\_B** is a qualitative, lateral flow test designed to detect the presence or absence of INFLUENZA (A or B) virus antigens in nasal or nasopharyngeal swab specimens.

- Same protocol of use with the classic rapid test for COVID-19
- Chemical-free sterilised swab
- 3 lines cassette

## TEST PROCEDURE



## RESULT INTERPRETATION



**RAPID TEST  
FLU A\_B**



[www.prognosis-biotech.com](http://www.prognosis-biotech.com)

✉ [info@prognosis-biotech.com](mailto:info@prognosis-biotech.com) ☎ +30 2410 623922

📍 Farsalon 153 | 41335 Larissa, Greece

**PROGNOSIS  
BIOTECH**